

FTV-P Series



**R32 Non Inverter
Wall Mounted**



FTV-P Standard Non-Inverter



Features



Powerful Mode

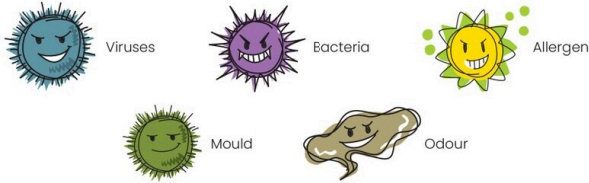
Once activated, this feature will engage the indoor fan motor to run at maximum speed for 20 minutes. The turbo airflow enables the desired temperature to be achieved faster, especially in larger spaces.



Gin-ION Blue Filter

This filter is treated with a positively charged silver ion, which efficiently draws viruses onto its surface and decomposes up to 99.9% in 2 hours. On top of that, this filter can deactivate bacteria and inhibit fungal growth on its surface to improve the quality of indoor air for a healthier lifestyle. The filter delivers consistent performance for around a year if filter is cleaned once every 2 weeks.

Substances can be collected and deactivate by filter:



Anti-Corrosion Treatment of Outdoor Heat Exchanger Fins

The outdoor unit's heat exchanger fins are processed using a special anti-corrosion treatment. The surface is covered with a thin acrylic resin layer to enhance the fins' resistance to salt corrosion. Higher Corrosion Resistance Gold Fin is available (Optional).



GO DAIKIN

This built-in network adaptor (AWM61A01) and the app turn a smartphone into a remote controller that can be used inside or outside the home. Together, they help to not only save energy and maintain comfort but also eliminate any worries of forgetting to turn off your air conditioner! (Certain app functions are optional.)



Compact & Easy To Use Controller

- Prominent temperature display.
- Real-time clock display. (DGS01 only)
- Easily accessible buttons.
- Wired controller option - Wired Remote



DGS01

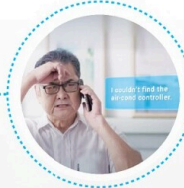
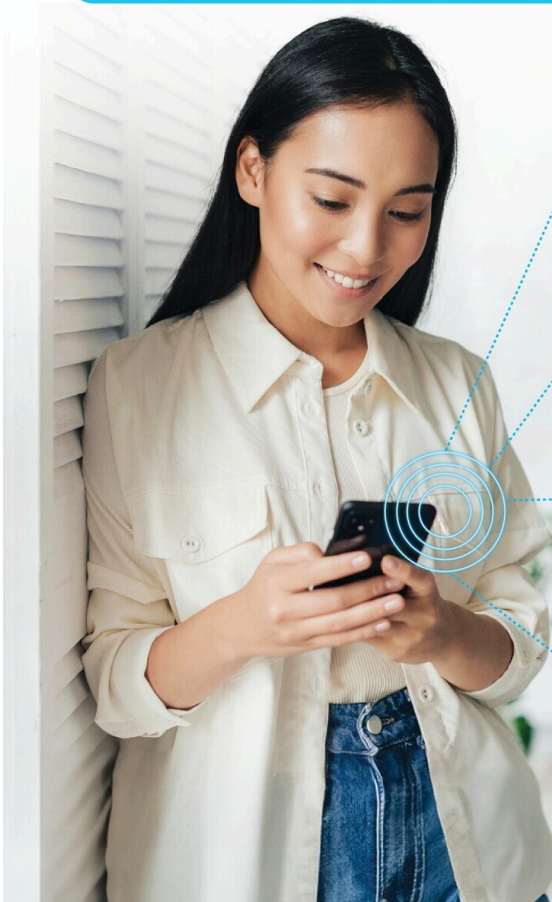


DSLM8

GO DAIKIN

In-Home & Out-Of-Home Function
Allows You To Control Your AC
At Anywhere Anytime.

Scan the QR code to find out more!



GO CONVENIENCE

- In-home & Out-of-home function allows you to control your AC at anywhere anytime.
- Weekly scheduling allows you to set your AC at your preferred timing at a weekly basis.



GO SAVE

- Statistical energy usage graphs that allows you to monitor and keep track of your daily energy usage to ensure an efficient AC operation.
- With this, greater savings can be achieved as you can now smartly monitor your AC energy consumption!

* The energy consumption values are based on averaged data. Monetary values is calculated based on domestic tariff A at 21.8sen/kWh.



GO COMFORT

- Different operational modes allows you to enjoy the different kinds of cooling experience.
- Advance control* that provides you with even more cooling options for a better cooling comfort.

* May vary depends on model availability



GO SHARE

- User control sharing easily allows you to share your AC controls with your family members through a simple QR code scanning.
- You can unbind the controls or restrict certain app functions of the AC from your family members at any time you desire.

GO DAIKIN Configuration

Internet

OUT OF HOME
GO DAIKIN
Control your AC at anywhere and anytime

SPECIFICATIONS	
Input Voltage	DC 5V
Power Consumption	750mW
Size (H x W x D)	32.1mm x 50.1mm x 15.0mm
Mass	APPROX. 23g
Wireless Lan Protocol	IEEE 802.11b/g/n
Frequency Range	2.4GHz – 2.48GHz
Encryption	WPA/WPA2

Required for Operation:

+

 +

 +

 +

Available At:



3 Simple Steps For Unit Pairing

STEP 1



STEP 2



STEP 3



Scan QR code to see GO Daikin setup video

ENJOY 2 YEARS FREE*1 UPGRADE TO PRO ON US

Function List	Standard RM0.00	Pro RM11.99 Per year
Energy Usage Monitoring		✓
Weekly Scheduling		✓
Countdown Timer		✓
Out-Of-Home AC		✓
Geofencing *2 (NEW)		✓
Indoor/Outdoor Temperature Monitoring		✓
Standard Control Functions *3	✓	✓
User Control Sharing to Family & Friends	✓	✓
In-Home AC Control	✓	✓
Auto Error Code Detection	✓	✓
Voice control (Alexa, Google Home)	✓	✓

Smart Control Subscription:

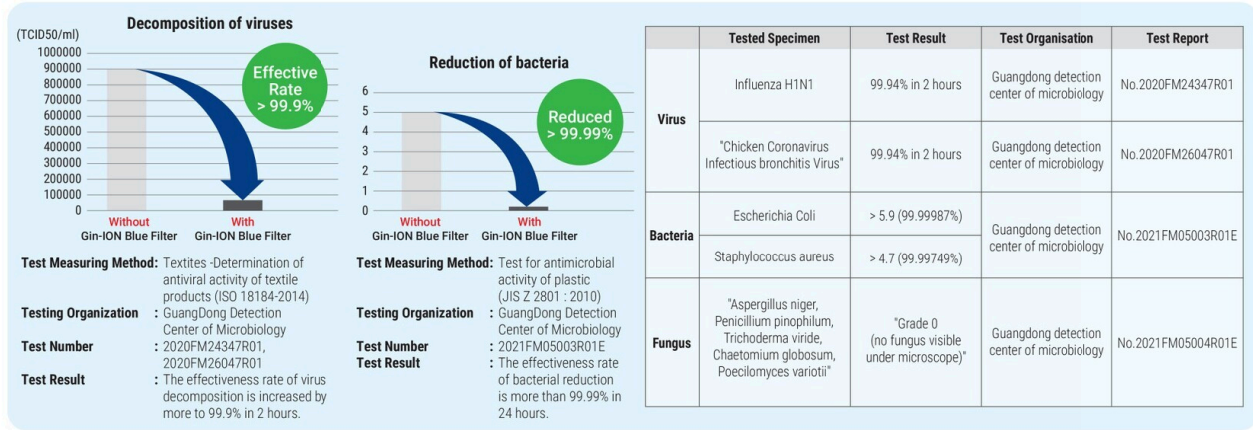
- Free 2 years upgrade to Smart Control Pro upon first time successful pairing to network adaptor (AWM61A01). Package will switch back to Smart Control Standard (FREE) after 2 years. User can choose to upgrade to Smart Control Pro with subscription of RM 11.99 yearly per air conditioner.
- Geofencing lets your AC automatically turn on when you get home and off when you leave. You can easily set and adjust the distance to match your needs.
- Function includes: On/Off, Operation Mode, Fan Swing, Fan Speed, Powerful Mode, Quiet Mode, Sleep Mode.

Go Daikin App:

- An Internet connection through mobile data or WiFi network is required to use Smart Control function.
- Connectivity of App to AC will depend on the effective coverage area of your Local Area Network (LAN).
- This device supports DHCP (Dynamic Host Configuration Protocol) only. Ensure that your router has DHCP server option function activated before pairing.
- The controllable functions and features may differ depending on the model.

Gin-ION Blue Filter Test Result

The Gin-ION Blue Filter has been tested and confirmed to decompose viruses, bacteria, and inhibit fungal growth on the filter surface.



Specification



FTV-P Series **R32**

Model name	Indoor unit	Wireless		FTV28PBV1MF9	FTV35PBV1MF9	FTV50PBV1MF	FTV60PBV1MF	FTV85PBV1MF						
		Wired		FTV28PBV1MW9	FTV35PBV1MW9	FTV50PBV1MW	FTV60PBV1MW	FTV85PBV1MW						
Outdoor unit				RV28PBV1M9	RV35PBV1M9	RV50PBV1M	RV60PBV1M	RC85BV1M						
Rated Cooling Capacity	Btu/h		9,500		12,000		18,000		22,500		30,000			
	kW		2.78		3.52		5.28		6.59		8.79			
Power Consumption	W		865		1,040		1,660		2,130		2,900			
Nominal Running Current	A		3.86		4.61		7.38		9.52		13.10			
CSPF	Wh/Wh		3.42		3.59		3.37		3.28		3.22			
Indoor	Air Flow Rate		cfm		342		355		531		614		931	
	Sound Pressure Level (H//M/L/Q)		dBA		37 / 33 / 27 / 25		39 / 35 / 29 / 28		42 / 39 / 36 / 35		46 / 43 / 39 / 37		51 / 46 / 42 / 39	
	Dimension (H x W x D)		mm		288 x 800 x 212		310 x 1,065 x 228		310 x 1,065 x 228		310 x 1,289 x 240			
	Unit Weight		kg		9.0		14.0		14.0		16.0			
Outdoor	Sound Pressure Level		dBA		46		48		52		52		54	
	Dimension (H x W x D)		mm		550 x 658 x 273		615 x 845 x 300		615 x 845 x 300		695 x 930 x 350			
	Unit Weight		kg		28		28		40		46		53	
	Piping Connection Size	Liquid	mm		ø6.35		ø6.35		ø6.35		ø6.35		ø9.52	
		Gas	mm		ø9.52		ø12.70		ø12.70		ø12.70		ø15.88	
	Maximum Pipe Length		m		25		30		30		30		50	
	Maximum Pipe Elevation		m		15		15		15		15		30	
Coil Type												Hydrophillic Blue Fin		
Power Supply													220-240 V/1ph/50Hz (Power to Indoor)	
Heat Insulation													Both Liquid and Gas Piping	
Energy Rating													3 Star	

Remarks:

- Due to product innovation, all specifications are subjected to change by the manufacturer without prior notice.
- All units are being tested and comply to ISO5151.
- Nominal cooling capacity are based on the conditions: 27°C DB / 19°C WB indoor and 35°C DB outdoor.
- Sound pressure levels are measured in anechoic chamber according to JIS C 9612 standard. During actual operation, sound pressure level will be higher as a result of room specification condition.
- The Gin-ION Blue Filter is not a medical device. Benefits shown are only effective for substances which are directly attached on the filter surface.
- Wireless model will be supplemented with a Wireless Remote Controller and a built-in network adaptor (AWM61A01).
- Wired model will come with only a Wired Remote Controller (DSLMB). To enable the Smart Control function, optional NS Splitter (R50044157819) is required.

DAIKIN MALAYSIA SALES & SERVICE SDN. BHD.

Call Centre: 1300-88-DAIKIN(324546)

198301014326 (109719-M)

Email: customer_service@daikin.com.my

Branches:

- Kedah Tel: 04-730 5670
- Johor Tel: 07-557 7788
- Penang Tel: 04-331 1670
- Pahang Tel: 09-567 6778
- Perak Tel: 05-548 2307
- Kelantan Tel: 09-747 4578
- Negeri Sembilan Tel: 06-768 8969
- Sabah Tel: 088-722 194
- Melaka Tel: 06-288 1133
- Sarawak Tel: 082-333 299

Website: www.daikin.com.my

Authorized dealer: